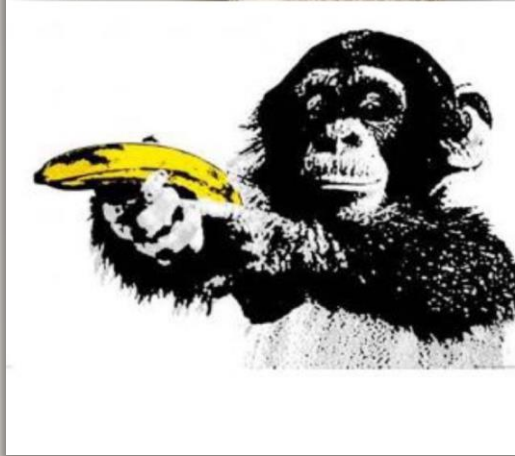


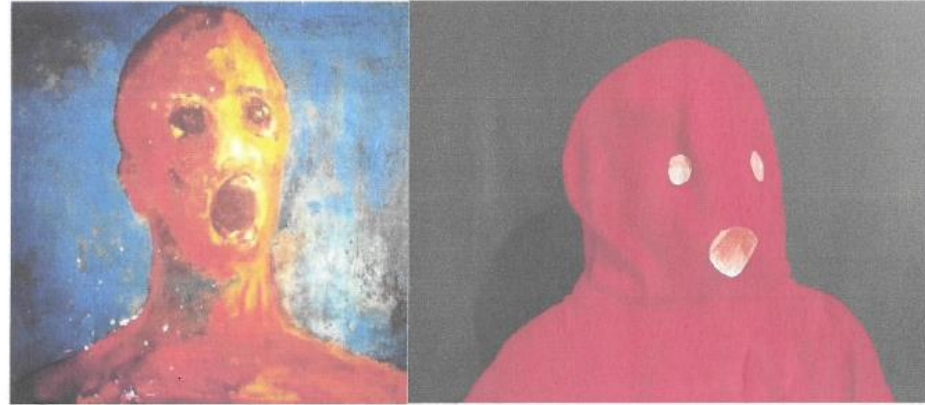
GETTY CHALLENGE



Les élèves de 5^e1 de Mme Faure ont relevé le challenge lancé par le Getty Museum pendant le confinement d'adapter une œuvre d'art avec ce que l'on a à la maison. La contrainte était de choisir une œuvre avec une action à décrire.

Découvrez ici les formidables adaptations de cette année avec la présentation et la description en anglais des élèves.

Enjoy!



This document is a painting. Its title is "L'homme angoissé." The date and painter are unknown. It comes from Sean Robinson's house.

The painting shows a red man who is crying out of terror. His mouth is wide open and his eyes are wide. It is probably not a normal human. It is maybe a supernatural mummy. The blue background is reinforcing this supernatural idea.

In the adaptation, I put upside-down a red sweater and I drew 3 circles: 2 small and one big; the two small circles represent the eyes and the big circle represents the mouth. The background is my bedroom wall and it represents the supernatural atmosphere.

Antoine - 5^è. 06/22



The painting was made by Gwer John. Its title is Young Woman with Black Cat.

There is a woman in the middle of the painting. She is wearing a blue dress and holding a black cat on her lap. She is also wearing a pearl necklace. The background is green.

In my adaptation, I'm wearing a blue dress. I'm sitting in the middle of the painting with the Fornite lama on my lap. I have no expression. I'm wearing a white pearl necklace. The background is blue. (Eva - 5e1 - 06/22)



His document is a painting. Its title is "morning sun ". It was painted by Edward hopper in 1952 and it comes from Columbus Museum of Art, Ohio but this picture has been also in the Tate in London.

We see a woman who is sitting on a bed. She is looking out of the window at buildings or houses, a landscape with splendid light. We can suppose that a woman is dreaming or she is sad.

On the adaptation, we see a boy on a blue sofa who is looking out of the window at the landscape. The light is beautiful.

Jules - 5°1 - 06/22



The first document is a “semi-painting” “semi-assembly” by Enrico BAJ. It was created in 1963 and it is titled “FIRE! FIRE!”. You can find it at the Tate Modern. In the middle is a dark green and light green and red humanoid being, shouting and raising its arms, facing at the spectator. It is composed of green iron bars for the body, red iron circles for the eyes and painting. In the background are many leaves and branches.

The second document is an assembly created in 2022. Unfortunately, you can't find it anywhere because it was destroyed. It is composed of a green notebook for the head and another red one for the body. The iron bars are represented by pencils and highlighters, the eyes by glasses, the mouth by paper and an uno card and, the arms by snake toys, the hands are gloves and the leaves are represented by the ground and green, orange and yellow toys.

Junian - 5^e1 - 06/22

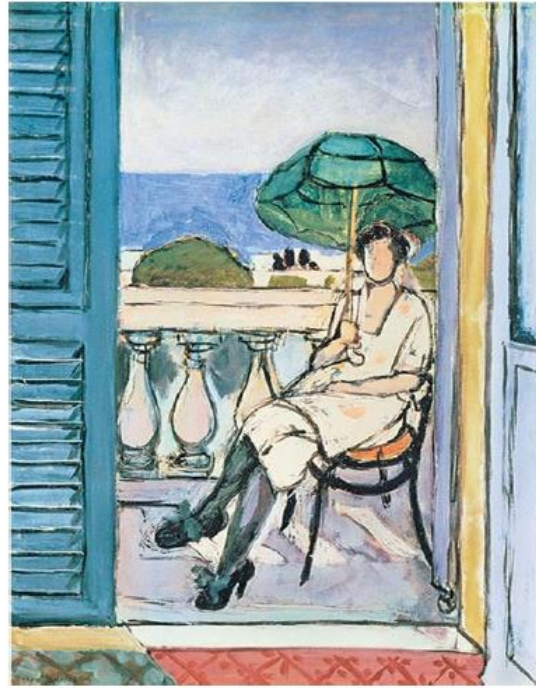


This document is a painting or a collage by Pierre Auguste Renoir. Its title is » Young girl combing her hair »; it was in 1894. It comes from Lehman collection museum in New York. *Painted*

It is a young girl doing her hair with a comb and a brown background like a curtain. She *is wearing* a white shirt and a red skirt.

On the left, *I'm* I see a person dressed in white. *I'm sitting* the person is seated and I see a brown background, a little red and a little purple. In the middle I see a blond girl combing her hair. *I'm my*

Léane - 5^e1 - 06/22



This document is a painting. Its title is *Woman with a green umbrella on a balcony*. It was painted by Henri Matisse in 1919.

In the middle, a woman is sitting; she is wearing a white dress and her right hand is carrying an umbrella. It is on a terrace and on her left, there is a shutter. In the background, there are green trees and we can see the sea. On the right, I see a window.

In the adaptation, it is a boy instead of a girl. I'm in the middle of the painting, wearing a blue t-shirt and grey trousers with a green umbrella. In the background, there are houses under construction with a crane.

Léon - 5e1 - 06/22



This document is a painting. Its title is *la jeune fille a la perle*; it was painted in 1665 by Johannes Vermeer. It comes from the museum Mauritshuis in Nederland.

The painting shows a woman. She is in a dark room and she is looking at us; maybe it's dark because she is in front of a black wall but there is light coming from the left. We can see a pearl in the middle of the painting, on her left ear.

In my adaptation, I am wearing a jacket representing the kimono, blue and white scarves on my head and I'm wearing a pearl-earring too. There is a black background. (Lina - 06/22 - 5e1)



This document is a painting. Its title is "still life with apples". It was painted in 1890 by Paul CEZANNE. It is in a private collection.

This painting shows a table in a room. There is plate and there are some fruits and a plant. Maybe the green fruit is a green apple or a green lemon. There is also a yellow fruit but it is hard to identify.

On the left we can see a plant; it is grey. In the middle, we can see four red apples in a plate .we can also see two green fruits and a yellow lemon.

Maithali – 5e1 – 06/22



The document of the. Is a Painting by Johannes Vermeer. Its tittle is "Girl with a pearl earring". It was painted in 1665 and it is coming from the Mauritshuis.

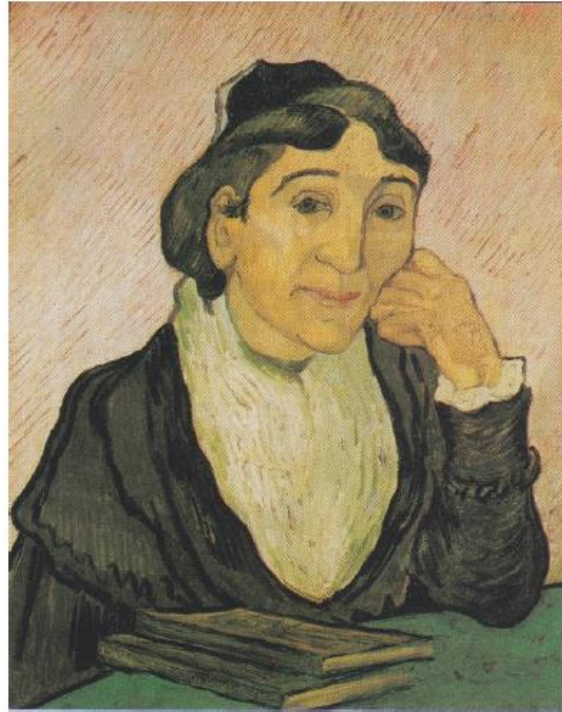
In this Painting we can see a woman in the foreground who is standing in the middle of the canvas ; she is looking at us. She have brown coat and a white collar, she allo have a blue and yellow sail. The backround is black and her pearl earring on her ear



In the adaptation, I ma standing and looking at the camera. There is a black TV in the backroud and I used a towel and a scarf to do the sail.

I Also took a tissue for the collar, a brown jacket and a pearl for my ears.

Marie - 5^e1 - 06/22

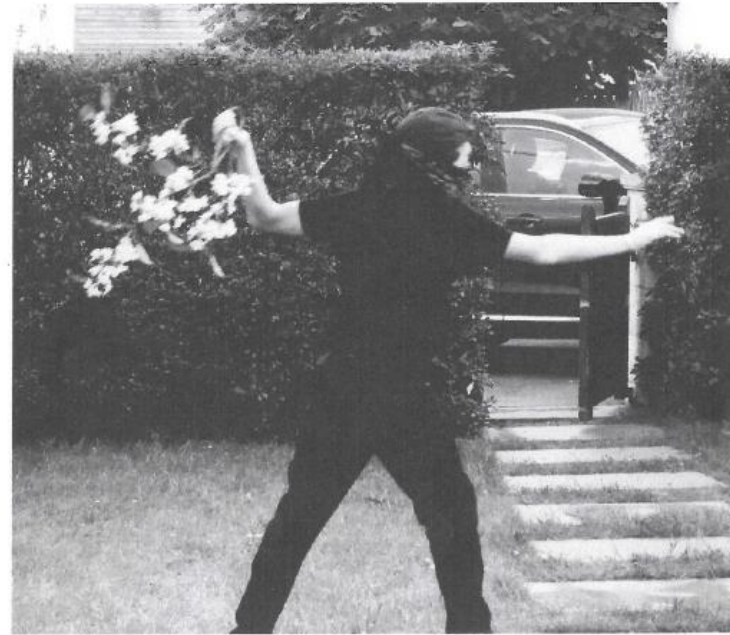


This document is a painting. Its title is « L'Arlesienne ». It was painted by Van Gogh in 1890.

The painting shows an old woman who is thinking. She is sitting by a table and there are books in front of her. She is wearing a hat and a black jacket. Moreover, she has a white scarf. She is looking straight ahead. Maybe she is in the library or at home.

In the adaptation, I am sitting behind a brown table. I'm not wearing a hat but a headband. L'arlésienne has grey hair and I have brown hair. One has short sleeves and the other long sleeves. The table is green and the other is brown.

Mélinda - 5e1 - 06/22

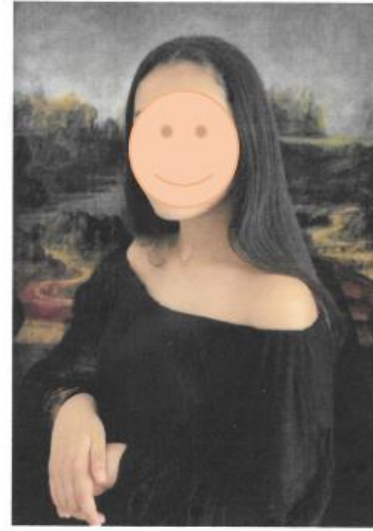


This document is a graffiti. Its title is "rage the flower thrower". It was painted by Banksy in 2003 and it is located in the streets of Jerusalem.

The graffiti shows a man throwing a bouquet of flowers. He is wearing a black and white outfit and a cap.

In the adaptation, there's a boy in the middle, and he is throwing flowers. He is wearing black trousers, a black T-shirt and a black cap and bandana. We can't see his feet. In the background, we can see a garden.

Nahil-5^e1-06/22



This document is a painting by Léonard de Vinci. Its title is "La Joconde"; it was painted in 1503. It comes from the Louvre Museum.

There's a seated woman with a black dress, with a landscape in the background.

On the right, we can see me with a black dress. I am sitting in front of my wall which I have replaced by the background of the Mona Lisa (Joconde).



This document is a painting by Keith Haring, untitled. Keith Haring started his career drawing in the street, particularly in the New York Subway.

On the painting we can see a blue man doing skateboard. The skateboard is red. There is a cross on his torso. There are many lines around the man, it gives an impression of movement.

In the adaptation, I'm in front of a white wall. I drew lines on white papers to figure the movement and put them on the wall at the top, on the right, on the left and at the bottom. I put a red carpet on my skateboard for the good colours. I'm wearing blue trousers and a blue hoodie. I put the hoodie upside down to hide my face.

Raphaël - 5e1 - 06/22



This document is a painting. Its title is *Untitled no 4*. It was painted by Paula Rego in 1999 and it comes from the Tate Modern in London.

The painting shows a sleeping woman. She is lying on a brown sofa with a blue cushion under her head. Maybe it's daytime because it's clear.

In the adaptation, I'm lying in the middle of a grey sofa representing the sofa of the painting. I'm wearing a white top and a blue skirt, worn white sneakers; I'm also wearing white socks which have come up high. Under my head I have a white cushion.

Soline - 5e1 - 06/22



This document is a painting called *Helene with the Colored Turban*. It was painted by Alexei Jawlenski in 1910 and it's comes from the Guggenheim Museum.

In the painting, there is a woman sitting probably on a chair. She is wearing a red-orange turban on her head; she is also wearing a blue dress and a red jacket. Her right arm is on a coloured pillow, and the background is green. She is looking down or her eyes are closed. Maybe she's waiting for something, or she is sleeping.

In the adaptation, I am sitting on a chair. I'm wearing a red-pink bath dress for the red jacket of the woman and a red pixie beanie for the Turban. The backroom is also green, but it is clearer than the painting. My arm is on a red box, but it's not as coloured as the pillow in the painting. And on the adaptation, I don't have a blue dress, but like blue trousers or jeans. (Tania - 5e1 - 06/22)



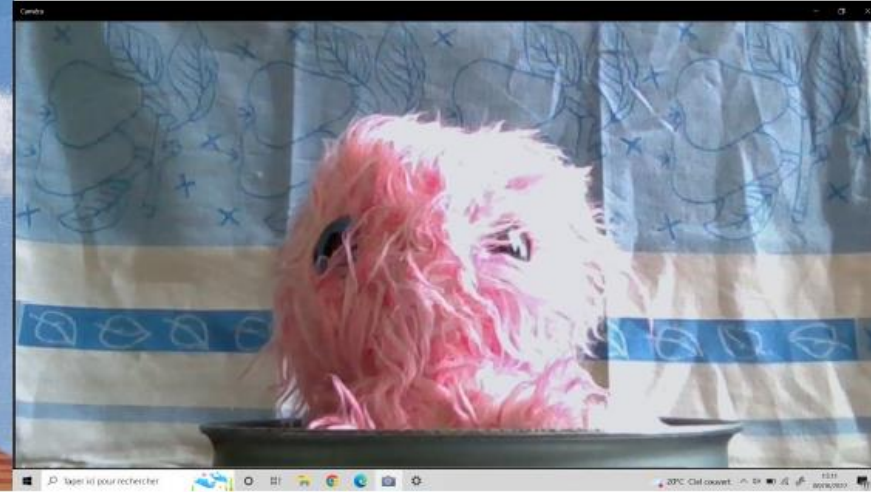
Christina's World, Andrew Wyeth, 1948

This document is a painting. Its title is "Christina's World". It was painted by Andrew Wyeth in 1948 and it comes from the Museum of Modern Art (MOMA) in New-York.

The painting shows a young woman with old lady hands. Maybe she is crawling on the ground. The scene takes place in meadow. We can see a farm on the top of the meadow. There is a grey background. She wears a pink dress with a black belt. She is disabled due to an illness. Maybe she is asking for help.

In the adaptation, my sister is taking the woman place. She is wearing a red dress with a belt and red plastic gloves. The scene takes places in my garden. I have installed a white sheet in the background to represent the sky. There are two houses on the grass. The grass is greener than the original painting.

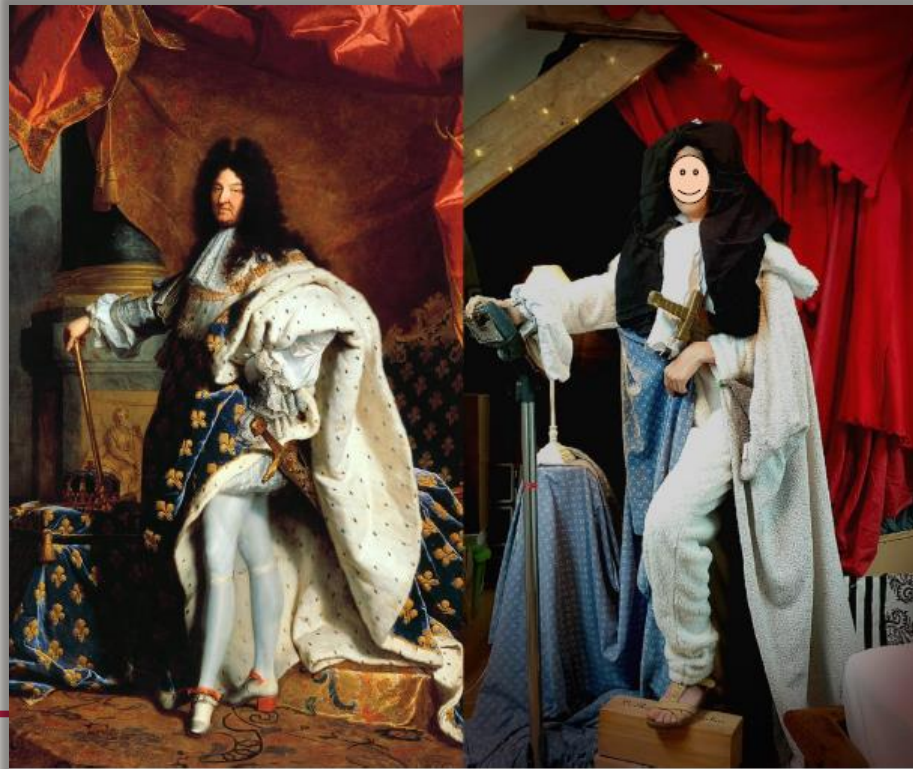
Lustrissy Thomas 5ème 1



In the first picture we can see a painting by Renée Magritte. Its French name is *Le chat dans un chapeau* painted in 1920 and exposed in the Tate Modern.

In the foreground we can see a grey cat sitting a in black hat. At the bottom we can see a brown table. In the background we can see a sky with clouds. The cat is looking at us and the hat is floating.

The second picture is a reproduction by Valentine in 2022 exposed in his photo gallery. In the foreground, at the bottom, I'm using a pink cat with blue eyes in a saucepan. In the background, you can see a blue tablecloth with white pears to represent the sky.



This document is a painting. Its title is *Louis XIV en costume de sacre*. It was painted by Hyacinthe Rigaud in 1701 and it comes from the Louvre museum.

On the painting we can see Louis XIV with royal clothes; maybe it takes place in a royal chamber. On the left there is a crown and Louis is holding a sceptre and there is a column in the background. In the middle, there is Louis XIV; he is holding a sword and his left hand is resting on his hip. He is looking at us.

In the adaptation, I am standing in the middle of the scene. there are red blankets for the background. On the left, the sceptre is exchanged with a vacuum cleaner. At the top, I am wearing two T-shirts on my head to represent Louis's wig. In the middle, the sword is switched with a toy. Finally, at the bottom, my left foot is resting on boxes.

Victor - 51 - 06/22

This document is a panting, the title is "le cri" it was painted in 1983 by Edward munch and it come from the national museum of Obso

The painting show a man crying or screaming in the middle there are a bridge and in the background there are two human and in the right there are a river in the adapta-tion there are an avocado in the middle and there are leather in the right and in the left in the bottom there are an Apple.



Yassine - 5°1 - 06/22